

# MISSION OUTREACH NEWS

JUNE 2021

## DEAR MISSION FRIENDS AT LAKE GROVE,

It's been over a year since I joined the Mission Outreach Team at Lake Grove. And wow, what a year it's been! Covid-19 required our mission partners and the mission team to pivot their outreach strategies, while continuing to provide the support, funding and outreach that was so desperately needed, both globally and in our own communities. Food distribution, wildfire relief, housing for homeless families and medical services were needed more than ever while staffing and location teams were minimized for safety. And yet, we were faithful in our mission.



As we begin to settle into our summer months and we return to a semblance of normalcy, there are many opportunities to serve others in our own community and the areas around us. Providing a home-cooked meal for the women and children served at Shepherd's Door, delivering food to a family in a hotel shelter, baking cookies for Portland Rescue Mission or simply writing a note of encouragement, are just a few ways our gifts of service make an incredible impact close to home. And if you're looking for a global missions opportunity, sponsoring a child through our partner, World Vision makes a profound impact for not only a child, but for their community as well. My hope is that as you read this month's newsletter it will not only encourage and inspire you but be a gentle reminder of the importance of our mission outreach.

I am humbled by the faithful service of our mission partners and the unwavering support of our congregation this past year. The opportunities we

are given to spread the love of Christ are the true blessings in this work.

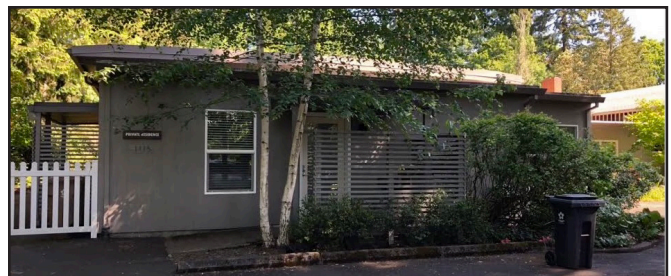
Julie Russell  
Program Assistant, Missions and Communications

## LOCAL MISSION PARTNER UPDATE



Recently, the [LOTSM](#) opened up their shelters for a tour of their two family living units while in between guests.

Click [HERE](#) to experience the tour and learn more about this important ministry.



If you are interested in volunteer opportunities with LOTSM, please contact Terrie Andrews at [terriea@lotsm.org](mailto:terriea@lotsm.org)

*(continued on next page)*

# MISSION OUTREACH NEWS

JUNE 2021

## INTERNATIONAL MISSION PARTNER UPDATE-SENEGAL

### TOULOO ALJANA

An update from our partner, Leopold Diouf on the progress at Toulool Aljana, the “Garden of Heaven” started by Khadim Gueye in Senegal.

“We proceeded at the picking and the sale of tomatoes and production has been very good and tomatoes are of good quality. We also harvested okra and cabbage. We sell our production in the villages neighboring Badar Gueye. The villages of Keur Makhali, Darou Fall and Badar Gueye are our biggest customers. The community appreciates the establishment of this market garden and the vegetables that are grown and are an improvement to nutrition. The impact is so great that one of Khadim’s brothers has started to revitalize the market garden.

“We will start selling onions in June, hoping that the price per kilogram of onions will be one of the best in the market.”

**Please pray for the continued success of their crops, which provides food security and economic prosperity for the region.**



## THANK YOU, DAVE STRONG!



*(Dave and Julie Strong in Senegal)*

Dave we are so thankful for your faithful service as our Missions Trustee these past 6 years. Your wisdom and dedication have been a blessing to us here at Lake Grove and to the many people you have touched through our local and global mission partners.

## WELCOME, JANI LOCKWOOD MISSIONS TRUSTEE



Jani is a long-time member of Lake Grove and has served as a deacon with various mission teams, as well as our prayer team. She also has extensive experience with Multnomah University and Seminary.

*(continued on next page)*

# MISSION OUTREACH NEWS

JUNE 2021

## COMMUNITY OPPORTUNITIES

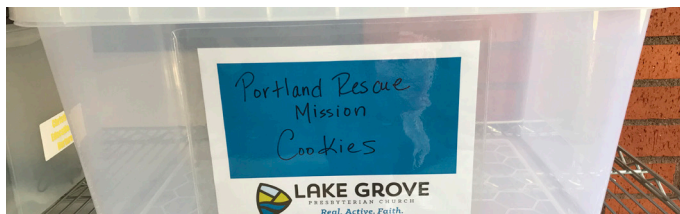
### SHEPHERD'S DOOR



[Shepherd's Door](#) is always in need of meal providers, mentors, and volunteers to assist the women and children that are served there. Donations of women's and children's new or gently used clothing, toiletry and personal care items, diapers and wipes are always welcomed. Donations are by appointment only. Please call (503) 906-7650 to schedule a donation drop off.

### COOKIE TEAM

The Cookie Team prepares and delivers home-baked cookies and notes of encouragement once a month to the Portland Rescue Mission's Connect program. This program assists men and women transitioning off the streets. **\*Update: Cookies are now collected in a marked bin located outside the Sunset Drive entrance at Lake Grove.** If you would like to bake for the Portland Rescue Mission, or create notes of encouragement, please contact Diana Burke at [dianalburke@comcast.net](mailto:dianalburke@comcast.net) Dropoff for June cookie donations is Sunday, June 27th!



## FAMILY PROMISE OF TUALATIN VALLEY



Our mission partner, [Family Promise](#) is operating at capacity with 15 families housed in their motel shelter program. They currently have opportunities for volunteers to deliver food to their motel shelter on Wednesday afternoons. Donations needed at this time are pots and pans, utensils, dishes, glassware, comforters, and queen or twin mattresses (with or without bed frames). For more information on volunteering or donations, please email Dannica at [volunteer@familypromiseoftv.org](mailto:volunteer@familypromiseoftv.org)

## GLOBAL OPPORTUNITY CHILD SPONSORSHIP

**World Vision**

Sponsoring a child is a beautiful way to make an incredible impact by helping and supporting a child in need, while forming a potentially life-long relationship. We recommend sponsoring children in Bangladesh, where the church has an active partnership with World Vision. Join the many other Lake Grove families making a difference in Bangladesh through sponsorship!

[World Vision](#) offers a new invitation to child sponsorship...**Be Chosen.** It gives the child the choice to choose their sponsor. Click [HERE](#) to learn more!

*"Encourage one another and build each other up."  
1 Thessalonians 5:11*



PASTOR GRAIG FLACH  
EMAIL: [GRAIG@LAKEGROVEPRES.ORG](mailto:GRAIG@LAKEGROVEPRES.ORG)

JULIE RUSSELL, PROGRAM ASSISTANT  
EMAIL: [JULIE@LAKEGROVEPRES.ORG](mailto:JULIE@LAKEGROVEPRES.ORG)